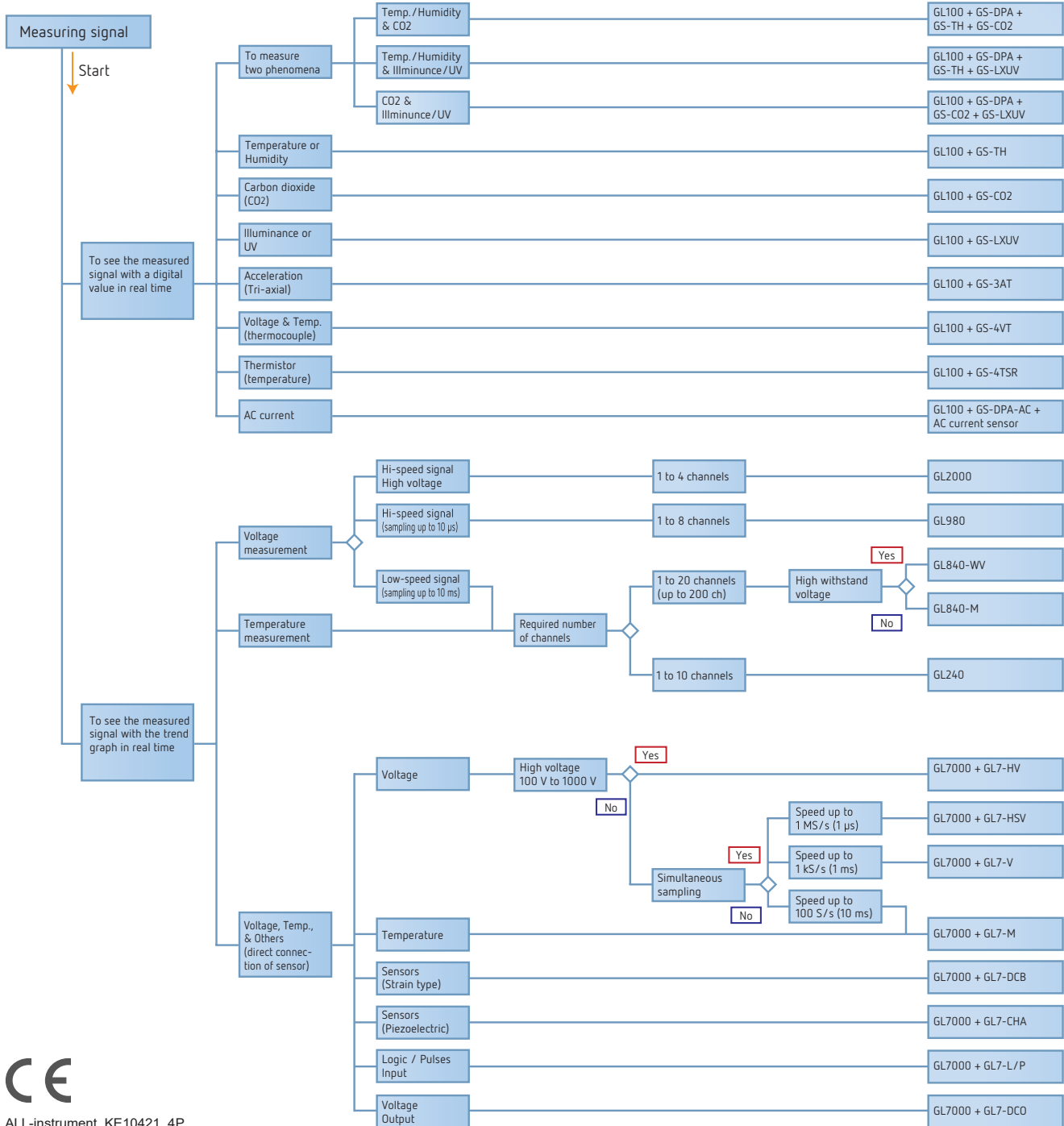


There is a wide variety of measurement as faster signal in the vehicle and equipment test, or slower signal like the temperature in the environment test. The device to capture the signal needs to be selected to fit the required application.

*Please refer to the inside page of this document for details on each product



ALL-instrument_KE10421_4P

- Due to the possibility of equipment or PC failure, the data files on the Instrument will not be guaranteed to be held on the memory. Please make a backup of data whenever possible to avoid data loss.
- Brand names and product names listed in this brochure are the trademarks or registered trademarks of their respective owners.
- Specifications are subject to change without notice. For more information about product, please check the web site or contact your local representative.



For using equipment in correctly and safely

Before using it, please read the user manual and then please use it properly in accordance with the description. To avoid malfunction or an electric shock by current leakage or voltage, please ensure a ground connection and use according to the specification.